

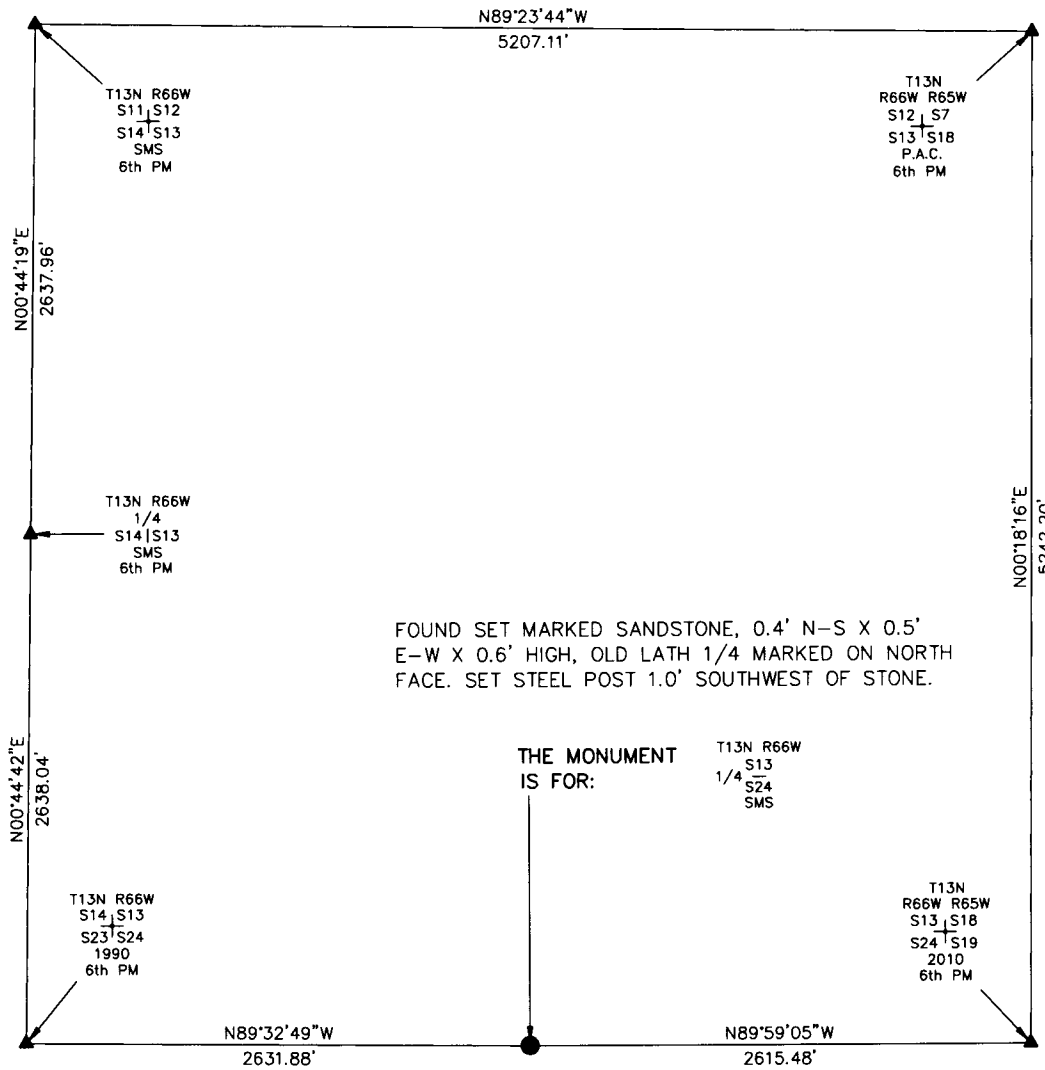
# State of Wyoming Corner Record

## CORNER PERPETUATION AND FILING ACT,

Regulations of the Board of Registration for Professional Engineers and Land Surveyors.)

Reverse side of this form may be used if more space is needed.

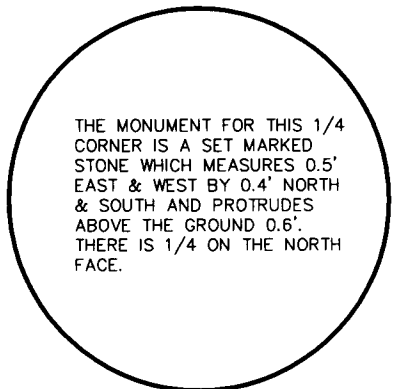
Record of original survey and citation of source of historic information (if corner is lost or obliterated). Description of corner monumentation evidence found and/or monument and accessories established to perpetuate the location of this corner. Sketch of relative location of monument, accessories, and reference points with course and distance to adjacent corner(s) (if determined in this survey). Method and rationale for reestablishment of lost or obliterated corner.



SCALE 1"=1000'  
(EXCEPT IN TRIVIAL CASES)  
BEARINGS ARE RELATED TO WGS 84 WITH GPS OBSERVATIONS  
DRAWN BY: M.D.  
P.C. G. STREETER  
COUNTY: LARAMIE

FOUND SET MARKED SANDSTONE, 0.4' N-S X 0.5' E-W X 0.6' HIGH, OLD LATH 1/4 MARKED ON NORTH FACE. SET STEEL POST 1.0' SOUTHWEST OF STONE.

THE MONUMENT IS FOR:  
T13N R66W S13 1/4 S24 SMS



THE MONUMENT FOR THIS 1/4 CORNER IS A SET MARKED STONE WHICH MEASURES 0.5' EAST & WEST BY 0.4' NORTH & SOUTH AND PROTRUDES ABOVE THE GROUND 0.6'. THERE IS 1/4 ON THE NORTH FACE.

### Marking on the Stone

Date of Field Work: 06/02/2010 Office Reference: \_\_\_\_\_

### CROSS INDEX DIAGRAM

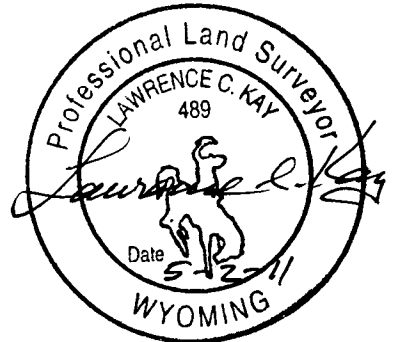
1	2	3	4	5	6	7	8	9	10	11	12	13	14	15	16	17	18	19	20	21	22	23	24	25	
A																									A
B																									B
C		6	5	4	3	2	1																		C
D																									D
E																									E
F																									F
G		7	8	9	10	11	12																		G
H																									H
J																									J
K																									K
L		18	17	16	15	14	13																		L
M																									M
N																									N
O																									O
P		19	20	21	22	23	24																		P
Q																									Q
R																									R
S																									S
T		30	29	28	27	26	25																		T
U																									U
V																									V
W																									W
X		31	32	33	34	35	36																		X
Y																									Y
Z																									Z
1	2	3	4	5	6	7	8	9	10	11	12	13	14	15	16	17	18	19	20	21	22	23	24	25	

Firm/Agency, Address

UELS, LLC  
85 South 200 East  
Vernal, Utah 84078  
Telephone Number: 435-789-1017

This corner record was prepared by me or under my direction and supervision.

SEAL & SIGNATURE



RECORDED 5/06/2011 AT 3:03 PM REC# 568293 K# 2219 PG# 494  
DEBRA K. LATHROP, CLERK OF LARAMIE COUNTY, WY PAGE 1 OF 1